



AR-LA CONSERVATION DELIVERY NETWORK OPEN

PINE LANDSCAPE RESTORATION PARTNERSHIP FY26

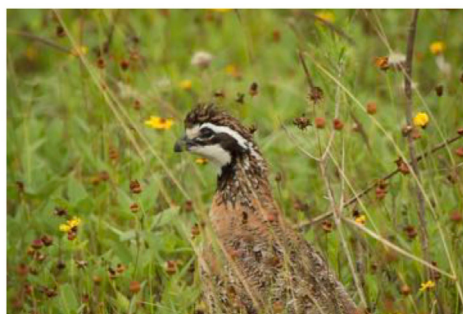
REGIONAL CONSERVATION PARTNERSHIP PROGRAM FACT SHEET



IMPROVE YOUR LAND FOR WILDLIFE

The Regional Conservation Partnership Program (RCPP) is a comprehensive, flexible program that uses partnerships to stretch and multiply conservation investments, reaching conservation goals on a regional scale.

- Project Overview - The AR-LA Conservation Delivery Network Open Pine Landscape Restoration Partnership (RCPP) project will address terrestrial wildlife habitat, fire management, and water quality concerns in Arkansas and Louisiana. By implementing open pine forest management practices across private lands in these two states, the project will advance the recovery of



species of conservation concern. The loss of open forest structure and plant diversity has caused declines in wildlife like the Northern Bobwhite, Henslow's and LeConte's Sparrows, Louisiana Pine Snake, Red-Cockaded Woodpecker and more. The project's goal is to open forest conditions for the benefit of these species.

- Conservation Practice Funding - Funding will be available to eligible landowners through RCPP. The Natural Resources Conservation Service (NRCS) will provide financial assistance for a systems approach using conservation practices to address resource concerns. Land and producer eligibility and all other program criteria for participation must be met to participate in this initiative.

Want to take your forests from this...



to this?



FAQ's:

1. How do I apply? NRCS and associated conservation partners will deliver this program collaboratively. Scan the QR code on the second page for a brief overview of how to get started with a partner biologist in your local NRCS.

2. What does it cost me and what cost share is available? Funding is available for reimbursement through this program to reduce forest density and allow sunlight to reach the ground at differing rates based on management activities.

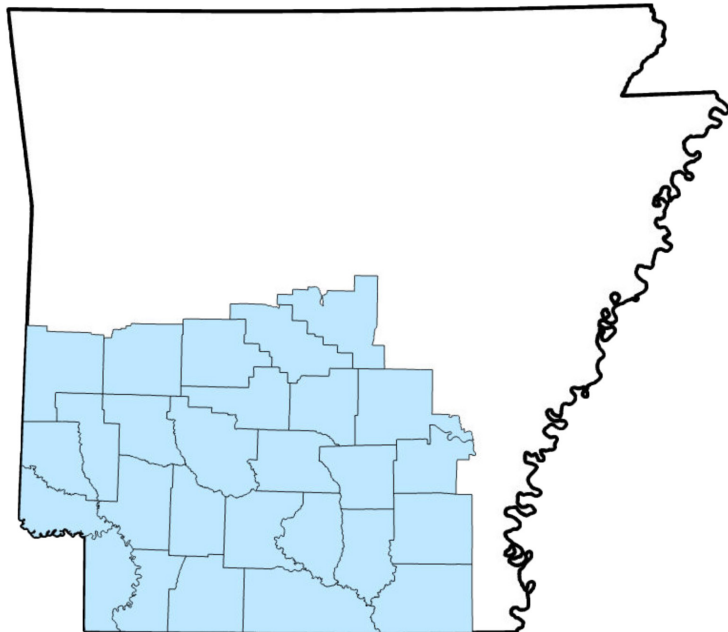
3. Why not my county/parish? This project is for a focused area although many opportunities also exist in other areas. Please reach out to your local NRCS office to discuss opportunities in your area.

Hear What Others Have to Say:

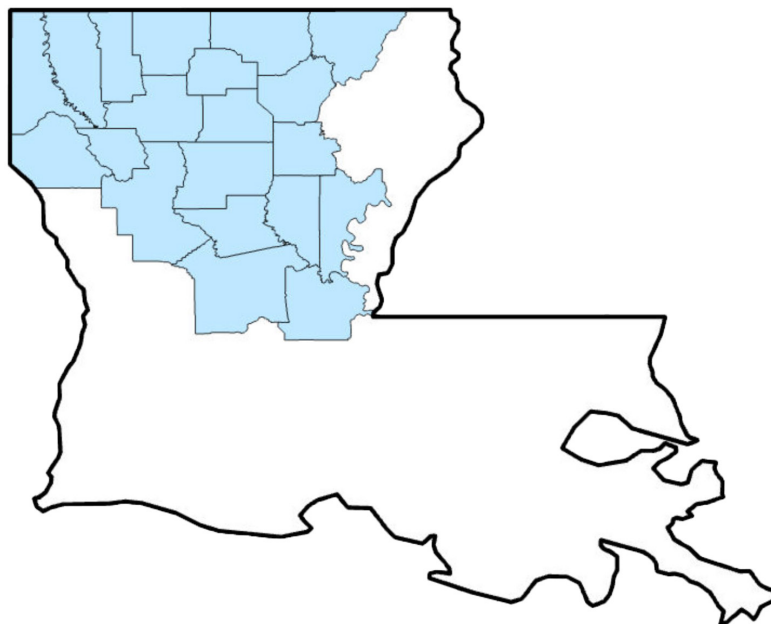


AR-LA CDN Open Pine Landscape Restoration #2

Arkansas



Louisiana



Approved Conservation Practices

- **Forest Stand Improvement:** Thinning dense forests using commercial harvest, heavy mechanical equipment, and/or herbicide treatments to create open habitat
- **Prescribed Burning:** The deliberate application of fire under specific conditions to achieve planned land management objectives
- **Firebreak:** Create a strip of ground cleared to bare soils
- **Restoration of Rare or Declining Natural Communities:** Restore and manage a site with selective additional mechanical and/or chemical treatments
- **Upland Wildlife Habitat Management:** Monitor wildlife response to your hard work through bird surveys
- **Brush Management:** Chemical or mechanical treatment of undesirable brush in forest understory or savanna habitats
- **Fuelbreak:** Remove ladder fuels and minimize fuel loading, particularly around structures
- **Woody Residue Treatment:** Treat slash, wood chips, etc., to reduce fuel load of woody residues

Learn more about the AR-LA Conservation Delivery Network Open Pine Landscape Restoration Regional Conservation Partnership Program by scanning the QR code:



Have questions for NRCS? Want to know what other programs may benefit you? Find a service center near you! Scan the QR code :

